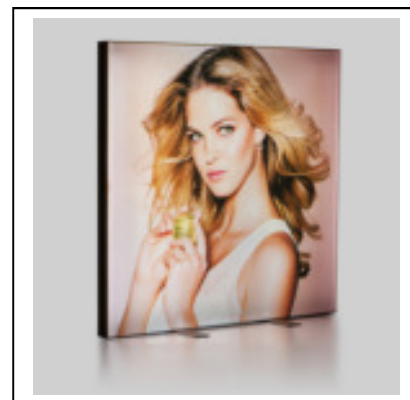




## Double Sided Fabric Light Box, Edgelit, 4" Profile

- CSA/UL Listed
- Available in Custom Sizes, 48" X 96". Contact Us for Larger Sizes.
- Easy to Change Fabric Print
- Even and Consistent Illumination
- Energy Saving and Maintenance Free
- Short Lead Time, Shipped Everywhere in Canada and the U.S.
- UL Approved, Class 2 Power Supply
- Advanced 3-year Warranty
- 2800 Average Lux



### Specifications

<b>Input Voltage</b>	24 Volt DC
<b>Power Consumption</b>	16 Watts/ sq. ft. of the Longer Side
<b>Wire Length</b>	36", with a Female Connector
<b>Light Source</b>	SMD3014 LED on the Entire Back, 2800 Lumen, with 50,000 hrs. Life Time
<b>Connector</b>	Standard Male-Female DC Connection, Coming Out from the Edge
<b>Certification</b>	CSA/UL (258420)
<b>Color Temperature</b>	6000K
<b>Mounting</b>	Free Standing
<b>Operating Temperature</b>	-30 °C (-22 °F) ~ +40 °C (+104 °F)
<b>Environment</b>	Dry location only
<b>Face Material</b>	Fabric
<b>Frame Material &amp; Color</b>	Anodized Silver, or Custom Colors
<b>Frame Depth</b>	3.75 Inches

### Accessories

<b>Plug-in Power Supply</b>	24V DC, 4A, 96W, UL Class 2 Listed
-----------------------------	------------------------------------



258420